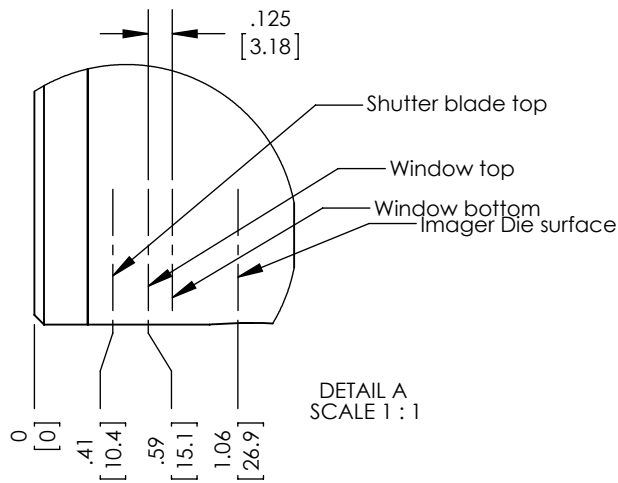
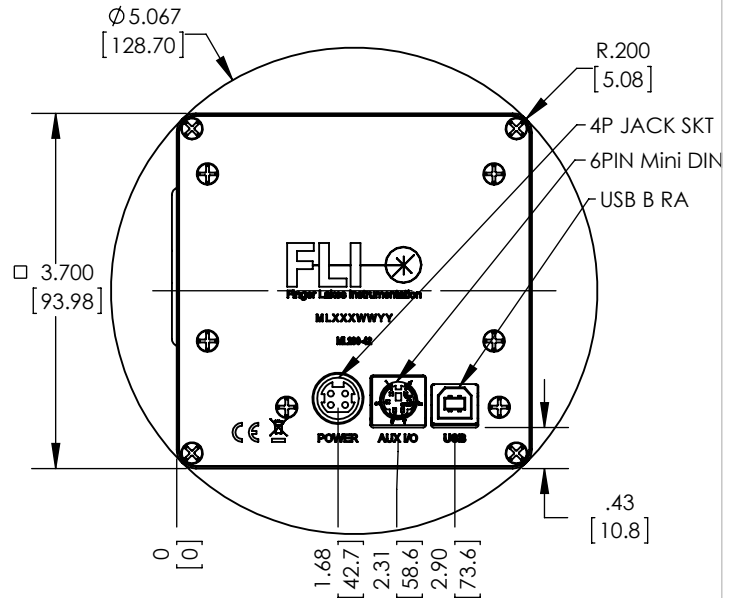
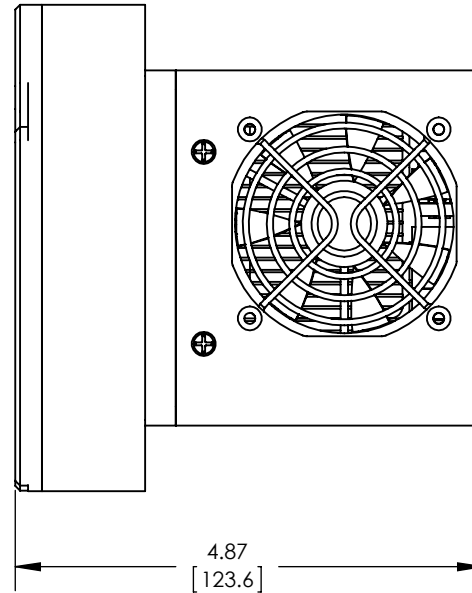
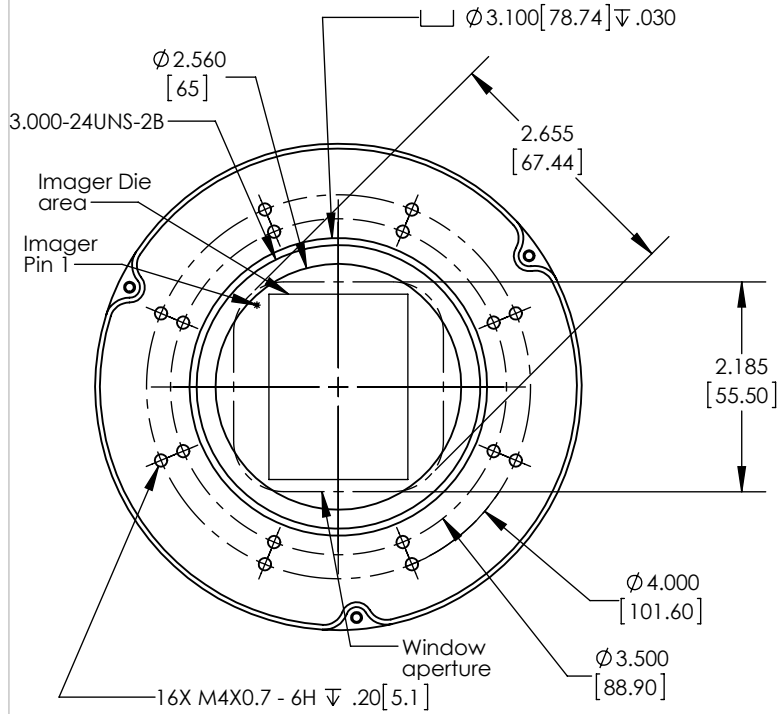
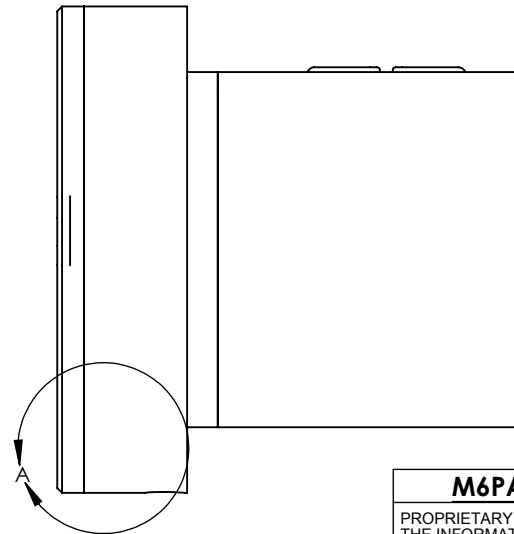


REV.	DESCRIPTION	DATE
A	Release	08/11/15



DETAIL A
SCALE 1:1



NOTES:

- All dimensions are physical.
A. For optical distances:
 - Subtract 1mm for sealing window.
 - Subtract 0.3mm for CCD cover slip if present
- Unless otherwise noted all dimensions are symmetrical about centerline

M6PA- 50100		NAME	DATE	Unless otherwise specified dimensions are in inches	SIZE
PROPRIETARY AND CONFIDENTIAL: THE INFORMATION CONTAINED IN THIS DRAWING IS THE SOLE PROPERTY OF FINGER LAKES INSTRUMENTATION. ANY REPRODUCTION IN PART OR AS A WHOLE WITHOUT THE WRITTEN PERMISSION OF FINGER LAKES INSTRUMENTATION IS PROHIBITED.	DRAWN	REC	08/11/15	TOLERANCES:	A
	ENG.			$\angle : \pm 1^\circ$	WT:
	QUALITY			X.XX $\pm .01$	REV
	PROD.			X.XXX $\pm .003$	A
				X.XXXX $\pm .0005$	SCALE: 1:2
	DO NOT SCALE DRAWING			INTERPRET GEOMETRIC TOLERANCING PER: ASME Y14.5	SHEET 1 OF 1