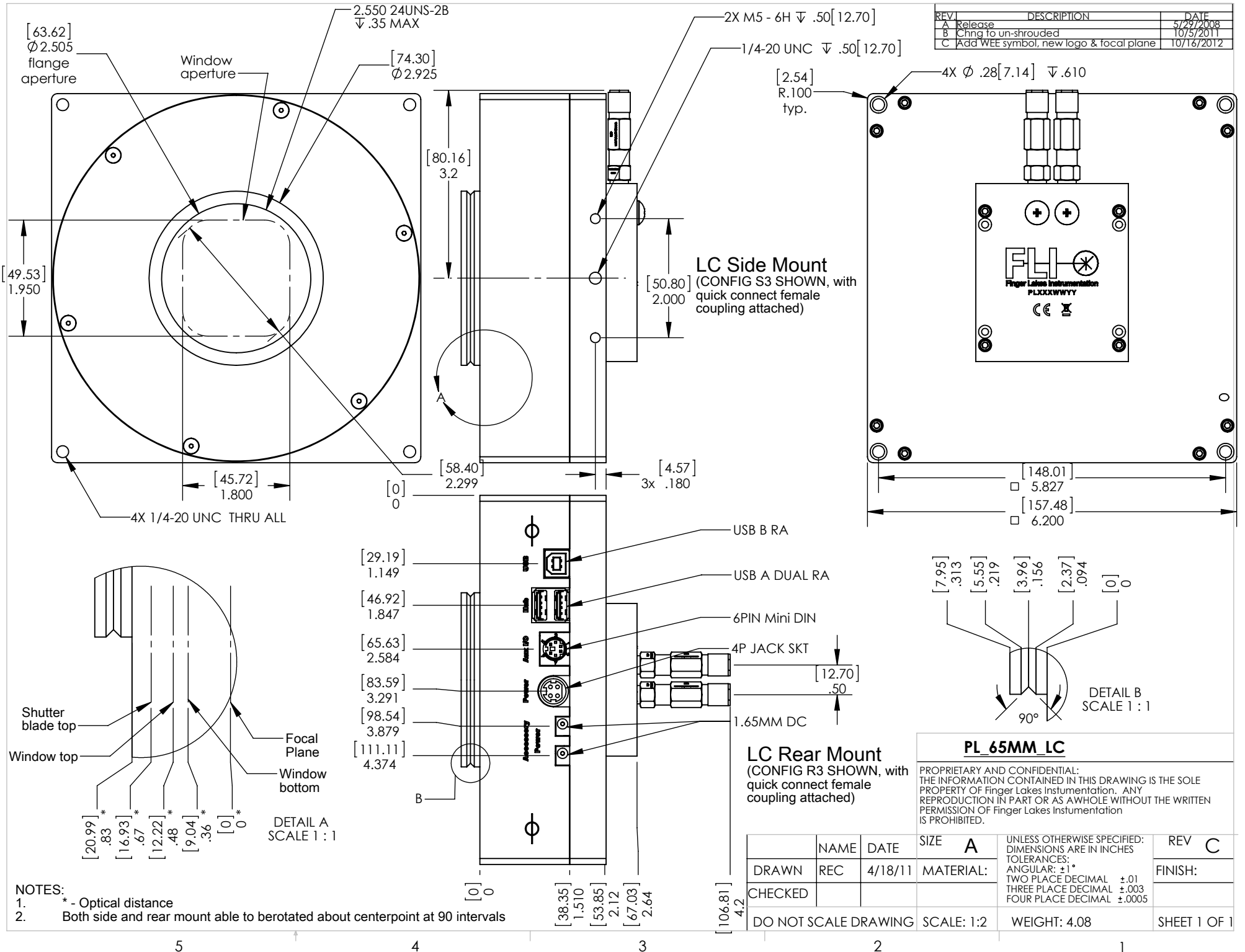


REV	DESCRIPTION	DATE
A	Release	5/29/2008
B	Chng to un-shrouded	10/5/2011
C	Add WEE symbol, new logo & focal plane	10/16/2012



**LC Side Mount**  
(CONFIG S3 SHOWN, with quick connect female coupling attached)

USB B RA  
USB A DUAL RA  
6PIN Mini DIN  
4P JACK SKT  
1.65MM DC

**LC Rear Mount**  
(CONFIG R3 SHOWN, with quick connect female coupling attached)

**PL 65MM LC**

PROPRIETARY AND CONFIDENTIAL: THE INFORMATION CONTAINED IN THIS DRAWING IS THE SOLE PROPERTY OF Finger Lakes Instrumentation. ANY REPRODUCTION IN PART OR AS A WHOLE WITHOUT THE WRITTEN PERMISSION OF Finger Lakes Instrumentation IS PROHIBITED.

NAME	DATE	SIZE	A	REV	C
DRAWN	REC	4/18/11	MATERIAL:	FINISH:	
CHECKED					
DO NOT SCALE DRAWING			SCALE: 1:2	WEIGHT: 4.08	SHEET 1 OF 1

- NOTES:**
- \* - Optical distance
  - Both side and rear mount able to berotated about centerpoint at 90 intervals