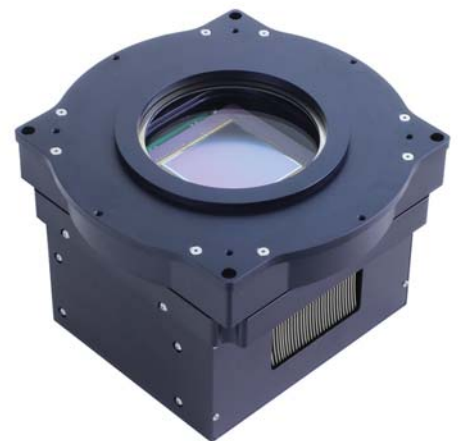




Eta Carina. ProLine PL16803 & CFW-5-7. Telescope Design: Philipp Keller. Image: Chart32 Team. Image Processing: Wolfgang Promper.

Great Cameras Pave the Way to Great Images

Our award-winning cameras, filter wheels, and focusers are hard at work in observatories from Purple Mountain in China to Cerro Tololo in Chile; from Siding Spring in Australia to Tivoli Astrofarm in Namibia. Our latest cameras include the high QE 50-megapixel ML50100 and the new Cobalt™ line of cameras intended for DEEP cooling and LARGE sensors. The ML50100 is 33% larger than the KAF-16803 and has 3X more pixels! The Cobalt's first release is the DC4320, holding the massive 2K x 2K KAF-4320 sensor (24 micron pixels; 69.5mm diagonal).



The New Cobalt™ Camera Series



www.flicamera.com

Visit us at flicamera.com
for more information
about our cooled CCD
cameras, focusers, and
color filter wheels.