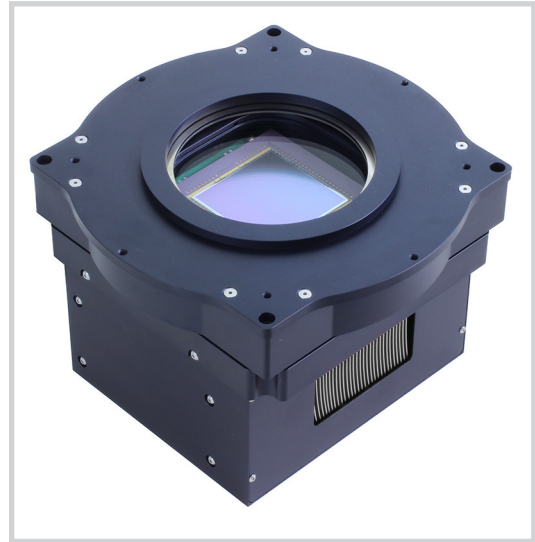


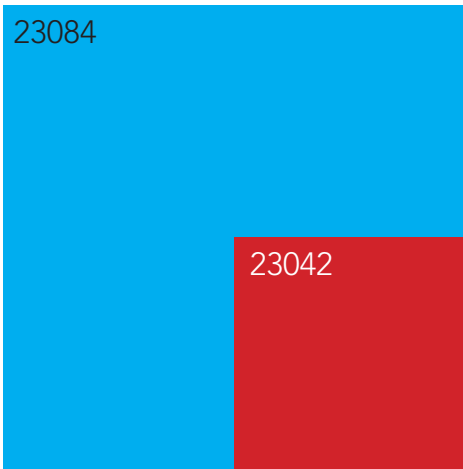
# Kepler Deep Cooled Cameras

## Large Area CCDs

FLI has brought two large area back-illuminated CCDs to its deep cooled Kepler platform: the back-illuminated CCD230-42 and CCD230-84. The CCD230-42 has long been a popular sensor in our ProLine and MicroLine platforms. The Kepler platform gives it added cooling, as well as support by our new FLI Pilot software, SDK, and ASCOM driver. The DC cameras have an optional SFP fiber interface.



Kepler DC Camera



Sensor Area

Kepler Model	DC23042	DC23084
Sensor Type	Back illuminated CCD	Back illuminated CCD
Resolution	2048 x 2048	4096 x 4096
Pixel Size	15 x 15 microns	15 x 15 microns
Imaging Area	30.7 x 30.7 mm	61.4 x 61.4 mm
Sensor Diagonal	43.4 mm	86.9 mm
Interface	USB 3.0	USB 3.0
Read Noise	15 e- at 500 kHz	15 e- at 500 kHz
Full Well Capacity (e-)	150,000	150,000
Digitization Clock	500 kHz & 2 MHz	500 kHz & 2 MHz
Optional Shutter	65 mm	90 mm
Peak QE	94%	94%
Cooling	70°C Below Ambient	60°C Below Ambient
Dark Current @ -25C	0.2 eps	0.2 eps

Specifications subject to change without notice.